

Creating Your Special Olympics Online Learning Account and Navigating to the Coronavirus Course



STEP 1

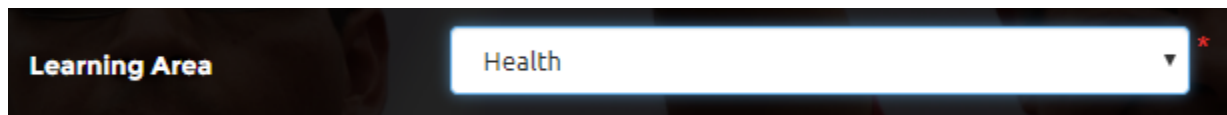
- Go to the registration homepage by typing learn.specialolympics.org into your internet browser*
- Select the "Register" button

Google Chrome, Mozilla Firefox, or Internet Explorer is required to use the Online Learning Portal



STEP 2

- Your screen will redirect you to "New User Registration- Part I"
- Select the Learning Area "Health"



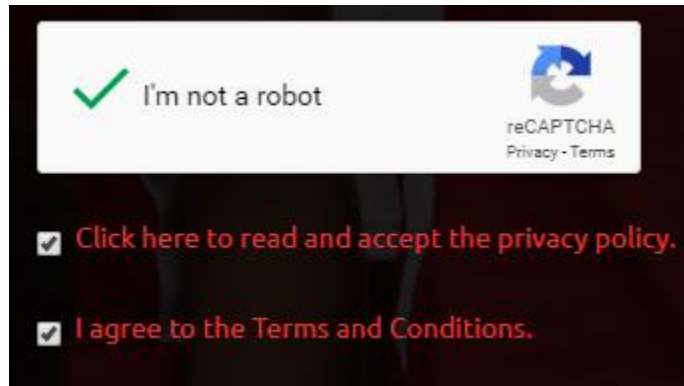
STEP 3

- Complete the other fields as directed
- Note Red Asterisk * fields are required
- Be sure to select the Area of Focus "Health Professional" or "Other" and then select your role

A screenshot of the "NEW USER REGISTRATION - PART I" form. The form includes fields for Learning Area (set to Health), First Name, Last Name, Email (with a "Don't have an email?" link), Date of Birth (Year, Month, Day), Region (with a "What Region am I in?" link), Program (Country/State), Primary Language (set to English), and Area of Focus. At the bottom, there is a reCAPTCHA "I'm not a robot" checkbox, a link to the privacy policy, a checkbox for "I agree to the Terms and Conditions.", and "Register", "Clear All", and "Cancel" buttons.A close-up screenshot of the "Area of Focus" and "Role" dropdown menus. The "Area of Focus" dropdown is set to "Other" and the "Role" dropdown is set to "Select Role".

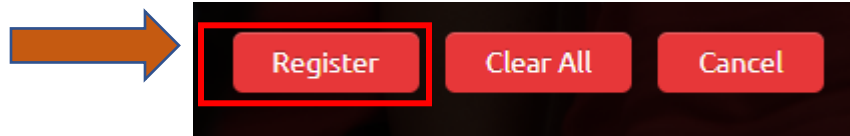
STEP 4

- Once you have responded to the fields in “New User Registration- Part I” check the “I am not a robot” box and check the boxes to agree to the Privacy Policy and Terms and Conditions



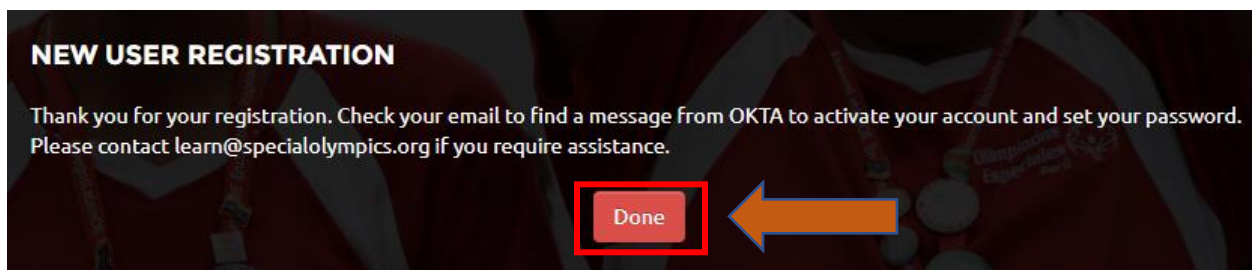
STEP 5

- Click “ Register”



STEP 6

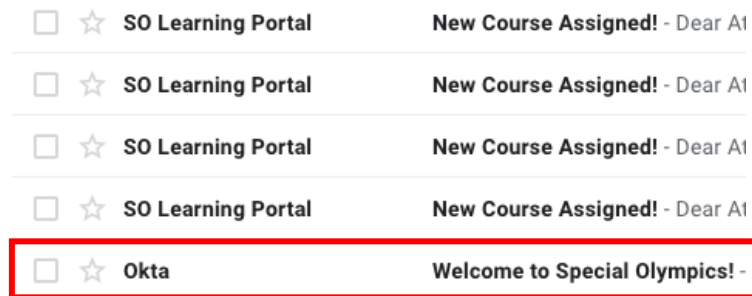
- Once you have clicked “Register”, you will be redirected to a confirmation message
- Click “Done”



*Some users will need to wait up to 48 hours for account approval

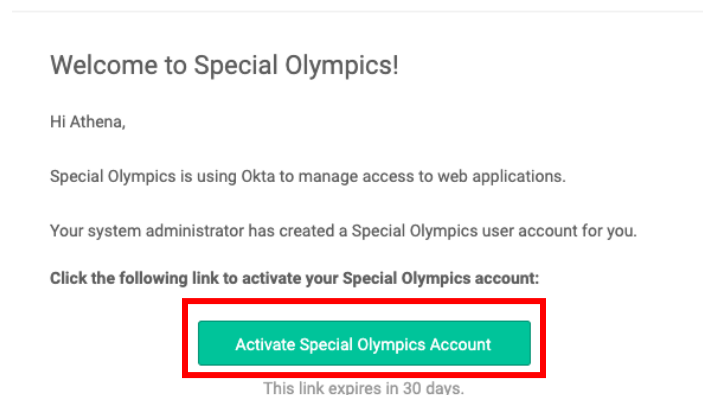
STEP 7

- To confirm your account, login to the email you used to register *
- You will receive an email from the sender “Okta” with the subject “Welcome to Special Olympics”, as seen below
- Click this email



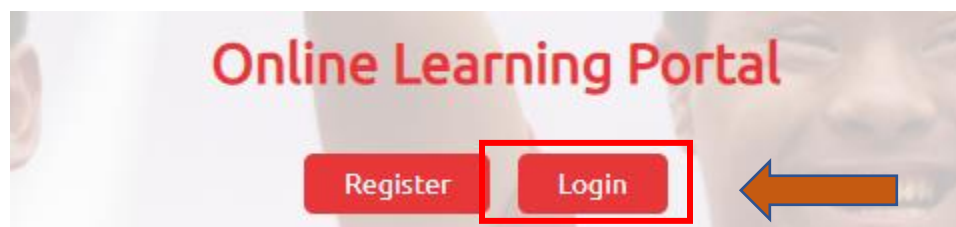
STEP 8

- Once inside the email sent by “Okta”, click the green “Activate” button to activate your account
- You will be redirected to the homepage



STEP 9

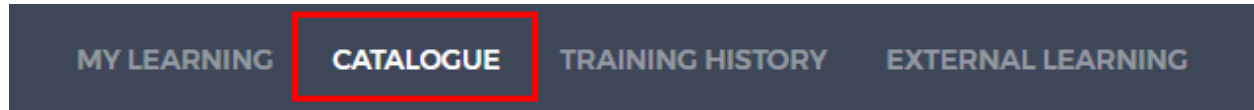
- Once on the Learning Portal Homepage, learn.specialolympics.org, click login
- Login with your email and password



To Navigate to the Coronavirus Course:

STEP 1

Click the "Catalogue" tab



STEP 2

Find the Coronavirus (COVID-19 Course) under the Course Catalog

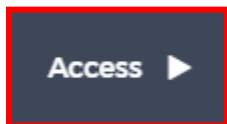
STEP 3

Click "Play"



STEP 4

Click "Access" or "Play" to begin the course



or

